

## RFID CASEIN LABEL

LABELYS has developed a new electronic identifier which associates conventional marking with RFID technology.

This innovative product can be easily incorporated into the production lines in order to optimize production management and ensure traceability of the products throughout their production and maturing.

This new identifier is placed under the same conditions as for a conventional casein label and requires no modification of existing facilities.

This identifier provides total food compatibility.



### APPLICATIONS

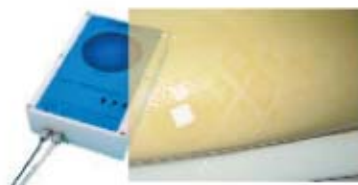
Starting with electronic identifiers and their conditioning, up to computerized management of the data, covering industrial readers along the way, LABELYS is able to help you in the development of complete solutions providing the means of:

- ♦ Keeping track of and managing production in your facilities in real time.
- ♦ Determining the stock situation and obtaining an instantaneous inventory.
- ♦ Collecting the information necessary for keeping track of brushing and turn-over operations for each cheese.
- ♦ Recording or reading automatically or manually any information useful for proper management of the production tools.

### HIGH-PERFORMANCE TOOLS



RFID casein label



Fixed readers



Portable readers



Software

